



The Newsletter of Sugar Grove Nature Center

Volume 7, Number 4

October/November/December 2011

Inside:

- 2 General Information
- 3 Musings & Meowings
- 4 Annual Appeal
- 5 Hummingbird Festival
- 6 Photo Contest
- 6 Letters to Santa
- 6 Meet the Intern
- 7 Volunteer Training
- 7 Winter Hours
- 8 Programs
- 12 Projects & Grants
- 13 Educator Workshops
- 13 Maple Sirup Registration
- 14 New Members
- 14 In Remembrance
- 15 Membership Form

It's almost that time again! The sound of leaves crunching under your feet, a refreshing chill in the air, the unmistakable aroma of fall leaves...it's time for Sugar Grove Nature Center's...

AUTUMN CELEBRATION!



Saturday, October 22, 2011
10:00 a.m. - 5:00 p.m.

*Admission only \$3/person,
3 years & under, free!*

*There is a small fee for some activities.
Members are invited to pick up
4 free activity tickets at the
membership table!*



FUN FOR EVERYONE!

Fall Color Walks, Scarecrow Factory, Pumpkin Bowling, Bobbing for Pumpkins, Nature Crafts, Campfire, Blacksmith & Woodturning Demonstrations, Daytime Astronomy, Horse-Drawn Carriage Rides, Seasonal Treats & More!

LIVE MUSIC

The Indras will kick out raw, over-the-top rock & roll, rockabilly, and R&B from the 1950s from 10:30 a.m. - 1:30 p.m.



The **Emerald Underground** returns again this year with their presentation of beautiful, upbeat Celtic fusion from 2:00 p.m. - 5:00 p.m.

PUMPKIN PATCH

Pumpkins, Pumpkins, and more Pumpkins! Visit our pumpkin patch and choose your favorite to take home and carve.....or stop by and decorate it at the pumpkin salon!

Continued on page 7.

Nature Center Staff

Angela Funk
Director

angela@sugargrovenaturecenter.org

Jill Wallace
Environmental Educator
jill@sugargrovenaturecenter.org

Randy Carriger
Education & Operations Assistant
randy@sugargrovenaturecenter.org

Joe Daniels
Intern

Daisy Kitty
Feline Relations Specialist
daisy@sugargrovenaturecenter.org

Sugar Grove Foundation Board of Directors

Linda Bristow, *President*

Gary Huppert, *Treasurer*

Craig Alexander, *Secretary*

Tricia Braid

Eric Funk

Richard Park

John Rehtmeyer

Don Schmidt

Eric Vaughn

— VISIT US ON THE — WEB OR JOIN US ON FACEBOOK

www.sugargrovenaturecenter.org

— NATURE CENTER HOURS —

April - October

Tuesday - Friday, 9:00 a.m.-5:00 p.m.

Saturday, 10:00 a.m.-3:00 p.m.

Sunday, 1:00-4:00 p.m.

November - March

Tuesday - Saturday

10:00 a.m. - 3:00 p.m.

Nature Center Closed

In preparation of Autumn Celebration:

Thursday & Friday, October 20 & 21

Thanksgiving: Thursday & Friday, November 24 & 25

Christmas: Friday & Saturday, December 23 & 24

Our grounds, trails, & Imagination Grove
are open daily from dawn until dusk.

— E-MAIL ALERTS —

Would you like to receive e-mail updates that include program reminders, local nature sightings, and nature news? If so, e-mail info@sugargrovenaturecenter.org and include "Nature Alerts" in the subject line.

— HAVE A WILD PARTY AT — THE NATURE CENTER

Sugar Grove Nature Center is a great place to host a birthday party! We provide the space, tables, and an exciting nature program. You provide the decorations, cake, and guests! The party lasts two hours---this allows ample time to eat cake, open gifts, play in Imagination Grove, and have an hour of "wild" naturalist-led activities. The fee is \$50/members, \$75/non-members for up to 15 participants and \$5 for each additional person. Maximum group size is 20 for ages 4-6 and 25 for ages 7 and up. You may choose from a variety of party themes. Reservations are required at least one month in advance. Call 309.874.2174 or e-mail jill@sugargrovenaturecenter.org for more information or to schedule your party!

The Nature of the Grove is a free quarterly publication of Sugar Grove Nature Center. If you would like to be added to our mailing list, either electronically or by postal service, please call 309.874.2174 or e-mail info@sugargrovenaturecenter.org.

Musings & Meowings by Daisy Kitty

Dear Readers,

As the season changes and the weather gets cooler, I am taking note of the clothing my guests use to cover their bodies. Shorts and t-shirts are being replaced by jeans and sweaters.

Being a kitty, I do not have to worry about changing my fur. Besides, it is already quite perfect, soft and fluffy, as a kitty should be. However, I do like to shake things up a bit from time to time to show off my personality and mood. This is where my wardrobe comes into play. The collar. Once used to restrain and identify, it has now become a fashion statement.

Often after my staff leaves for the day, I'll hop on the computer-thingy and do a little online shopping! PetCo boasts a selection of 77 different collars... and that's only one store! There are so many options today for the fashion forward feline!

Not to mention collar accessories. Yes, even collars have accessories. There is, of course, the traditional ID tag. I'm not sure why I need one. After all, everyone already knows who I am. It is pretty, though- a little gold heart with my name and phone number. It suits me just fine. In addition, there are charms available in every shape and color imaginable, and even sparkly letters.

But there is one accessory I simply will not tolerate. Many of these collars come with a little bell. Really? A bell? How is a hunter of my prowess supposed to sneak up on moths, spiders, and mice with a bell on my collar?!? It is difficult to take a kitty nap when every time I move my head I hear ringing in my delicate ears. I insist that my staff remove the bell immediately. And don't even get me started on leashes. Those are for dogs! But I digress.



My cat collar closet currently features several options for my choosing: 14 collars, 1 scarf, 1 bandana, and 4 ridiculous hats. In recent weeks, I've been sporting an adorable yellow collar with small bees covering it. While ideal for summer, it may be time to exchange it for something more fashionable for autumn. Perhaps a nice brown or orange collar with a leaf charm. Possibly my more formal pink bow tie or something with bats for Halloween. You'll just have to stop in and see what I decide!

Kitty Kisses,

Daisy 

Inaugural Annual Appeal

Sugar Grove Nature Center, although being open less than a decade, has become a special place for people to learn about, experience, and enjoy the beauty and nature of Funks Grove. Sugar Grove Nature Center provides so much for so many people in central Illinois, as well as for visitors from across the country and beyond!

Reaching our goal of continuing and expanding upon our nature-based educational opportunities and events is a priority for the Center. However, to achieve this goal we are asking for financial support from our patrons, members, and friends. The value of your experiences at Sugar Grove Nature Center may be priceless, but operating the programs, facilities, and grounds requires financial investments. Your financial support of the Nature Center is essential if we are to continue to meet the needs of existing and future programs, as well as maintain our site features. Therefore, we are asking you to consider making a contribution to our Inaugural Annual Appeal.

A vivid example of our impact was revealed shortly after our recent and wildly successful Hummingbird Festival and Pollination Celebration attended by nearly 700 people. Some of the staff and volunteers had a casual debriefing session after the event. One of our volunteers relayed a story that really caught our attention and warmed our souls. It illustrated the marvel and excitement attendees experienced from the display of ruby-throated hummingbirds. One young child was overheard saying to her parents, "Wow! Oh my goodness, can you believe how fast those hummingbirds' wings are flapping? How can they do that? And, their hearts beat so fast...this is just so cool!" Hearing this kind of exclamation throughout the day was a positive re-enforcer for staff and volunteers alike.

You must know that every contribution, of any size, to this Annual Appeal is significant. Your support is also highly valued by the patrons who participate in programs and special events, hike the trails, play in Imagination Grove, and watch the birds from our observation room. Your help will make these opportunities a continuing reality. We ask you to contribute what you can with the knowledge that your 100% tax-deductible contribution will help us do what we do best - provide quality, engaging programs, a warm and friendly facility, and beautiful grounds to explore!

Please take a moment to complete the Annual Appeal Contribution Form on following page, write a check, and mail them to the Center. Your investment in the future of Sugar Grove Nature Center will make a positive difference!

Thank you for your generosity in helping to ensure the continued success of Sugar Grove Nature Center.

Gratefully,
Sugar Grove Nature Center Staff, Volunteers & Board



Hummingbird Festival



Thank you to everyone that helped make our Hummingbird Festival and Pollination Celebration a success: our sponsors, volunteers, and visitors! An amazing 35 hummingbirds were banded!



INAUGURAL ANNUAL APPEAL FORM

Yes, I Want to Help Sugar Grove Nature Center!

I proudly enclose my gift of: _____

Name: _____

Address: _____

City: _____ State: _____ Zip: _____

Phone: _____ Other: _____

Email: _____

Please make check payable to
Sugar Grove Foundation



Your gift is tax deductible to the
full extent allowed by law



Sugar Grove Nature Center
4532 N 725 East Road
McLean, IL 61754



309.874.2174
www.sugargrovenaturecenter.org



This & That

PHOTO CONTEST DEADLINE EXTENDED!

Do you like to take pictures of wildlife, landscapes, plants and fungi, or people in nature? If you have answered "yes" to any of these categories, perhaps you should participate in Sugar Grove Nature Center's 2011 Nature Photography Contest! Sugar Grove Nature Center is pleased to announce our second annual Nature Photography Contest, providing a wonderful opportunity to showcase your photographic talent as well as the natural beauty of central Illinois.

The contest includes both an adult and youth (under 13 years) division. Categories within the adult division are the following: Wildlife (anything from insects to mammals, please no domesticated animals), Landscapes, Plants and Fungi (close-ups), People in Nature (written release required from people shown in the photograph.) There is only one category in the youth division, Nature, which includes wildlife, landscapes, plants and fungi, and people in nature. Photographs taken from January 1, 2010 through October 7, 2011 are eligible for submission. All photographs must be taken in McLean or the surrounding counties (see rules for county eligibility) in Illinois. Photos must be submitted to the Nature Center, 4532 N 725 East Rd. McLean, IL 61754. They need to be post-marked by October 7 or dropped off during open hours by October 11. For contest rules and entry forms, visit www.sugargrovenaturecenter or contact us at 309.874.2174.



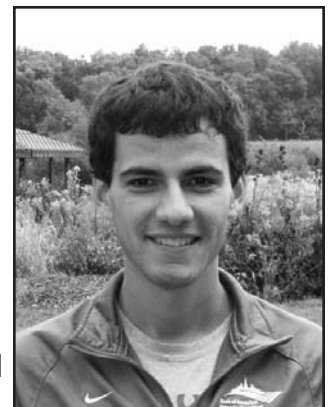
LETTERS TO SANTA

Once again, the critters of Funks Grove will be collecting letters to Santa and delivering them personally! Boys and girls of all ages are invited to write their letters to Santa, either at home or at our "writing station" in the Nature Center, and drop them off in a special mailbox located along our Imagination Grove trail. It's not a long walk, just across the parking lot and over the Covered Bridge. The critters of Funks Grove will then promptly deliver them. Be sure to stop in the Nature Center first and pick up some food to offer the animals as a "thank you." The animals will be accepting and delivering Letters to Santa up until Christmas Eve beginning November 25 from dawn until dusk, even when the Nature Center isn't open. Make this one of your Christmas traditions!



MEET THE INTERN

Hey! My name is Joe Daniels. Currently, I live in Bloomington, Illinois while attending Illinois Wesleyan University, but I am originally from the Chicago suburb of Brookfield, home of the famous Brookfield Zoo. I am a Junior Environmental Studies major, with a concentration in International Sustainability. I am not completely sure where I will end up working when I graduate, but am thinking something along the lines of working for the EPA or for a non-profit. I chose to intern at Sugar Grove because although it may not be what I would be doing working for the EPA, I still get to work out in nature and help out with a great organization. It may be hard work, but getting to spend time out here at least twice a week is well worth it! I am looking forward to an amazing semester of being Sugar Grove's (only) Fall intern!



This & That

VOLUNTEER TRAINING

*Friday, December 2; Noon
Registration required.*

All current volunteers as well as those interested in joining the volunteer family at Sugar Grove Nature Center are encouraged to attend our Volunteer Training Session. We are excited to share our new Volunteer Manual with everyone. Join us as we provide lunch at noon followed by a brief introduction to the manual and review of volunteer rights and responsibilities. We will discuss volunteer projects, upcoming programs and events, and more!



WINTER HOURS & NATURE CENTER CLOSINGS

Our winter hours will begin on November 1 and will continue through March 31. The Nature Center building will be open Tuesday - Saturday, 10:00 a.m.-3:00 p.m.

Sugar Grove Nature Center will be closed on the following dates:

Thursday & Friday, October 20 & 21 in preparation for our Autumn Celebration.

Thursday & Friday, November 24 & 25 for Thanksgiving. We will reopen Saturday, November 26.

Friday & Saturday, December 23 & 24 for Christmas. We will reopen Tuesday, December 27.

Grounds, trails, and Imagination Grove will remain open from dawn until dusk daily.



Autumn Celebration (Continued from page 1)



STEP BACK IN TIME

Visit a buckskinners' camp and a 1750's trading post. Meet with historical reenactors featuring a cooper, spinner, carver, doll maker, quilter, and more. Visit the blacksmiths and wood turners for hand-crafted items including camp equipment and decorative items!

VOLUNTEER!

Do you enjoy attending Autumn Celebration? Would you like to be a part of it? Volunteers are needed to sell tickets & staff activity booths, among other things. We also need assistance with set-up on Wednesday & Thursday, October 19 & 20. If you are interested, contact Angela Funk at

309-874-2174 or angela@sugargrovenaturecenter.org.

For more information and an updated event schedule, visit our website, www.sugargrovenaturecenter.org.



October, November & December Programs

KIDS

Little Wonders: All About Autumn

Ages 3-5 with an adult chaperone

Wednesday, October 26; 10:00-11:30 a.m. or 1:00-2:30 p.m. Note this is the fourth Wednesday of the month instead of the usual third.

Fee: \$5/child members, \$7/child non-members, registration required.

Crunch the leaves, smell the air, and see the colors! In addition to creating a fun craft and enjoying a story, we'll use all of our senses, including taste, to figure out what Autumn is all about.

Homeschool Class with Miller Park Zoo: All in the Family- Illinois Animals & Their Relatives Around the World

Ages 6-12 years old

Friday, November 4; 1:00-4:00 p.m.

Fee: \$10/child members of SGNC or MPZ, \$14/child non-members, registration required.

Class will take place at Miller Park Zoo, 1020 S. Morris Ave., Bloomington, IL. Registration is through SGNC. Please fill out the form at www.sugargrovenaturecenter.org/registernow.pdf and send in with payment.

Miss Shannon from Miller Park Zoo and Miss Jill from Sugar Grove Nature Center have partnered up to educate homeschool children about the animals that live in their backyards and to meet some of their animal relatives found all over the world. Participants will meet at Miller Park Zoo. Join this NEW class for homeschoolers!

Little Wonders: Silly Squirrels

Ages 3-5 with an adult chaperone

Wednesday, November 16; 10:00-11:30 a.m. or 1:00-2:30 p.m.

Fee: \$5/child members, \$7/child non-members, registration required.

Squirrels stay active all winter long, and now they are busy making sure they have stashed enough food away for the cold days ahead. Learn about where they live, how they hide and find their food, and all of the uses for that cute bushy tail!

Little Wonders: Winter Birds

Ages 3-5 with an adult chaperone

Wednesday, December 21; 10:00-11:30 a.m. or 1:00-2:30 p.m.

Fee: \$5/child members, \$7/child non-members, registration required.

Some birds, such as cardinals and chickadees, don't go south for the winter. Discover how they cope with the cold and make a bird feeder to help keep their tummies full!

Experience Winter

Ages 6-12: Wednesday, December 28; 10:00 a.m. - 3:00 p.m.

Fee: \$10/child members, \$14/child non-members; Registration required.

Class may be divided depending on the ages and interests of participants.

Don't spend your entire winter break inside! Step into the brisk air to explore, look for animal tracks, learn about snowflakes, take a hike, create a wintery craft, and much more. A lunch of hot dogs over the campfire and chicken noodle soup will be served. Dress for the weather!

Continued on page 9.

October, November & December Programs

Continued from page 8.

ALL AGES

Family Nature Exploration Days

Saturday, October 1, 10:00 a.m.-3:00 p.m.

Saturday, November 5, 10:00 a.m.-3:00 p.m.

Saturday, December 3, 10:00 a.m.-3:00 p.m.

Saturday, January 7, 10:00 a.m.-3:00 p.m.

Free, no registration required.

Bring the family out for a day of fun at the Nature Center! A guided hike will take place at 11:00 a.m., stop inside to create a make-and-take craft at any time, and don't miss animal feeding time at 1:00 p.m. Make a day of it!

Canoeing at Evergreen Lake

Sunday, October 2, 1:00-3:00 p.m.

Fee: \$10/members, \$14/non-members, ages 8 & up, (7 & under are free); registration required.

Joe Daniels will begin by giving a brief history of the canoe as it applies to other cultures such as the Native Americans and the Pacific Islanders. An orientation of safety and an introductory lesson will follow. Spend the remaining time canoeing around beautiful Evergreen Lake with your newfound skills! This program is suitable for families including beginners.

Twin City Amateur Astronomers Public Viewing Session: Jupiter's Moons

Saturday, October 1, 7:00-9:00 p.m.

Free; no registration required.

Don't miss the last astronomy public viewing session of the year! Join the Twin City Amateur Astronomers (TCAA) as they take you on a journey to Jupiter's Moons! The King of Planets dominates our solar system through its gravitational pull and contains some of the largest moons in our solar system. A presentation will be followed by a sky tour using a laser pointer and telescope viewing. The program may be cancelled in the event of a cloudy sky. Phone Carl at 309.830.4085 or Lee at 309.324.2804 to confirm if you are unsure. For additional information, visit www.tcaa.us.

Acoustic Irish Music Jam Session

Saturday, October 15; 10:00 a.m.-Noon

Saturday, November 19; 10:00 a.m.-Noon

Saturday, December 17; 10:00 a.m.-Noon

Free, no registration required.

Acoustic musicians of all levels are invited to join an Irish-music jam session at the Nature Center on the 3rd Saturday of every month. Experienced players will be on hand to lead beginners through a couple of tunes at a slow pace to start, then will progress to an up-to-speed session of traditional Irish tunes. Listeners (and players) are welcome to come-and-go as they enjoy all of the other activities at Sugar Grove Nature Center. For more details, contact Martha Tyner at mtyner@iwu.edu.

Nature Center Closed

Thursday & Friday, October 20 & 21

The Nature Center will be closed in preparation for Autumn Celebration.

Continued on page 10.

E-mail register@sugargrovenaturecenter.org or call 309.874.2174 to register.



October, November & December Programs

Continued from page 9.

ALL AGES, CONTINUED

Autumn Celebration!

Saturday, October 22; 10:00 a.m.-5:00 p.m.

Fee: \$3/person, no registration required.

This year promises to be more fun than ever! See page one for details.

Campfire & S'mores Program: Fire- Nature Knows Best

Friday, November 4; 6:30-8:30 p.m.

Fee: Free/members, \$3/person non-members, registration required.

Fire can be very dangerous, but in nature it is helpful and even necessary. In this family friendly program, we'll discuss the role fire plays in the environment, and Smokey Bear's message of fire safety will be taught. Then we will head out to our own fire to cook s'mores and drink hot chocolate! In case of inclement weather, the program and snacks will be indoors.

Travel Talk

Tuesday, November 8; 7:00-8:30 p.m.

Fee: Free, donations appreciated; registration required.

In the past year, Sugar Grove Nature Center interns have been traveling to all corners of the world! They are coming together to share their experiences learning, teaching, and absorbing cultures which are extremely different from ours. Courtney spent a semester in Tanzania, Africa. She developed a strong interest in the flora and fauna of the area, especially birds. Hannah taught environmental education in the remote Alaskan village of Kotzebue, where it never got dark and the food was.....*interesting*. And, Joe was in Christchurch, New Zealand at the time of the devastating earthquake before relocating to Auckland. This program is for anyone who loves to travel, learn about other cultures, is interested in environmental and social issues around the planet, or who just want to say hi to these fabulous interns!

Nature Center Closed

Thursday & Friday, November 24 & 25; will reopen Saturday, November 26.

Friday & Saturday, December 23 & 24; will reopen Tuesday, December 27.

ADULTS

Stewardship Work Days

Saturdays, October 1, 15, & 29; 9:00-11:00 a.m.

Saturday, November 12; 9:00-11:00 a.m.

Saturday, December 10; 9:00-11:00 a.m.

Free, No registration required for individuals. Groups interested in helping must contact the Nature Center at least one week prior to the workday to determine whether the planned activity is suitable. Don Schmidt leads a faithful group of volunteers in a variety of stewardship activities every other Saturday, even as the days get colder! Stop out on occasion or join the group on a regular basis to assist with exotic species removal, seed collection, and other projects. Work days include learning about Illinois' natural history first-hand, while spending a nice morning with friends who believe in the importance of being stewards of the environment.

Continued on page 11.



October, November & December Programs

Continued from page 10.

ADULTS, CONTINUED

Fall in Love with Watercolors® with Cynthia Kukla

Saturday, October 1; 9:00 a.m.-1:00 p.m.

Fee: \$35/members, \$40/non-members, registration and prepayment required, form available at www.sugargrovenaturecenter.org/registernow.pdf. Supply list will be sent upon registration.

Once one understands watercolors, they really are easy, spontaneous, rich, and varied. In the first half of the program, Cynthia will introduce basic wash techniques and basic color mixing in the classroom for students to get started. Then, we will work outside on site, especially to capture the glorious colors in the Grove. It is a richer painting experience to work from life rather than work from photographs.© The last half-hour will be a casual critique. Bring a lunch, or snacks will be available.

ABC Run/Walk (Adventures Benefiting Children)

Sunday, October 16; 8:00 a.m. (Doors open at 7:30 a.m.)

Fee: Free, but donations of any amount to benefit the children of Heartland Head Start are appreciated. No registration required.

Spend a beautiful fall morning running or walking for a good cause- Heartland Head Start. The main course is a 7 mile loop course on roads. You can turn this into a shorter course by turning around at any point. The other, more adventurous option is to run the trails. Water/Gatorade and snacks will be provided. Bring snacks to share if you wish. Questions? Call Merlin or Meg at 309.454.4820.

Elementary Beekeeping

Friday, November 11; 2:00-3:30 p.m.

Fee: \$5/members, \$7/non-members

Are you thinking about beekeeping but not sure where to start or how much time it will take? Carol Glennon will teach the very basics about getting started as a beekeeper. We will talk about what a year in beekeeping involves, what equipment is needed to be successful, and how much time it takes. You'll also be directed to resources for purchasing equipment and local groups to continue your journey to becoming a beekeeper!

EDUCATORS

Illinois Birds: Raptors

Thursday, November 17; 9:30 a.m.-3:30 p.m.

Fee: \$10/person; lunch and snacks provided; register through Illinois Department of Natural Resources- <https://www.enticeworkshops.com/>

Please see page 13 for details.

Certified Interpretive Guide Program, National Association for Interpretation

Mondays, November 14 & 21, and December 5 & 12

Please see page 13 for details.

Your interest may be the deciding factor to run a program! Most programs require advanced registration. Please try to register at least 7 days in advance. Waiting until the last minute may result in a program being canceled due to low enrollment or missing out because it is full.

Please register by e-mailing register@sugargrovenaturecenter.org or by calling 309.874.2174.



Projects & Grants

Support for the daily operation of the Nature Center as well as special projects and site improvements would not be possible without the generous support of our members, businesses in the community, grants, and donations. And, volunteers help make it all happen from helping to secure funding to investing their sweat equity and talents. The Nature Center is a very busy place! If you have been out recently you may have noticed several changes and exciting additions!

MACHINE SHED RENOVATION

A major transformation of our machine shed has been taking place over the last six months! The building had a lot of potential but needed a lot of work. With a leaky roof, no or broken doors, and decades-worth of "stuff" piled high it did not serve much function. As the Nature Center continues to grow and flourish and more and more volunteers get involved in a variety of projects it has become increasingly obvious that in order to increase our capacity and efficiency, renovating the machine shed was necessary. Volunteers George Farnsworth and Doug Oehler have taken on this task with great zeal! A very generous donor (who wishes to remain anonymous) enabled us to re-skin and re-roof the existing structure. "The guys" and their dedicated work crew have been working for months on this project and have just completed construction of the interior storage units. We are so excited about the storage space and the increased utility it will afford. Plus, the building looks great!

EROSION CONTROL & STREAMBANK STABILIZATION

A tributary of Timber Creek runs east to west from the railroad tracks, through the prairie, behind the lawn, and through Imagination Grove. Over the last few years severe erosion has taken place in several places resulting in major degradation of the stream and trail wash-out. A grant received from the McLean County Soil & Water Conservation District/Illinois Department of Agriculture provided funding to implement several best management practices including the implementation of a cross vane, stone toe protection, and multiple grade control riffles along the length of the stream. Work was completed in June and already with the little rain we have had the effectiveness of these improvements are evident! The next time you visit Imagination Grove or walk the trails, be sure to check it out!

TREES FOREVER WILDLIFE BUFFER PROJECT

Sugar Grove Nature Center's partnership with Trees Forever continues with the installation of the Sugar Grove Wildlife Buffer Project, part of a special program funded by the National Fish & Wildlife Foundation. The goals of the program are to demonstrate techniques to improve water quality in the Upper Mississippi River Basin and to enhance wildlife habitat in the area. Nature Center volunteers, interns, and staff planted a variety of trees, shrubs and native plants and grasses along 175 feet of the streambank. This area was previously mowed lawn and is now a showcase of black-eyed susans, purple coneflowers, and a diversity of other native species.

Sugar Grove Nature Center is the project of Sugar Grove Foundation, a 501(c)3 not-for-profit organization. Grants and donations are vital to our existence! We wish to extend a heartfelt thanks to the granting agencies listed above as well as those donors who wish to remain anonymous.



Professional Development for Educators

ILLINOIS BIRDS: RAPTORS

Thursday, November 17; 9:30 a.m.-3:30 p.m.

Fee: \$10/person, registration required on the Illinois Department of Resources website, <https://www.entice-workshops.com>. Professional Development Units are available.

Educators of grades four through eight are invited to register for this workshop to learn about the hawks and owls of Illinois. Life history and identification information will be provided. Participants will see/meet a live hawk, falcon, vulture, owl and bald eagle, as well as look for raptors outside. You'll receive many resources to help you incorporate the topic into your curriculum. Teachers of other grade levels are welcome to register and attend the workshop but may need to adapt the information as appropriate. This workshop is part of the ENTICE (Environment and Nature Training Institute for Conservation Education) program from the Illinois Department of Natural Resources. Lunch will be provided.



CERTIFIED INTERPRETIVE GUIDE (CIG) WORKSHOP

Mondays, November 14, 21, December 5, 12; 9:00 a.m.-5:00 p.m.

For more information including fees and registration, please visit http://www.interpnet.com/certification/workshops/CIG_McLeanIL_Apr10.shtml.

The National Association for Interpretation (NAI) provides training and networking opportunities for interpreters of natural and cultural history in nonformal settings. The Certified Interpretive Guide (CIG) program offers an opportunity to train guides in interpretive techniques and then acknowledges that training with an internationally recognized certification. The certification recognizes those individuals who exhibit knowledge and skills necessary to assure quality interpretive services to all audiences.



MAPLE SIRUP EXPERIENCE REGISTRATION

Sugar Grove Nature Center is excited to offer the Funks Grove Maple Sirup Experience to students throughout central Illinois and share this important part of Funks Grove Heritage. This is a unique opportunity for students to actively engage in the production of maple sirup. They will explore its history from Native American to modern times through demonstrations and hands-on activities. The biology of the sugar maple will be covered, and there will be time to explore the Nature Center. Each child will get to tap a tree and take home a sample of Funks Grove's finest.

The Maple Sirup Experience Field Trip is offered for first grade and up. The four-hour experience costs \$5/student. Our 2011 classes will be held on February 21, 22, 23, 24, 28, and 29; and March 1, 7, and 9. Your field trip can be reserved with a \$100 deposit.

We have also set aside two days especially for homeschool groups, March 6 & 8, from 10:00 a.m.-2:00 p.m., and participants should bring a sack lunch. The fee is \$5 per student (over the age of 2), \$2/teachers and chaperones. Registration by mail is required. Forms will be posted online at www.sugargrovenaturecenter.org by December 1.

A variety of other maple sirup programs are offered for scouts, groups, and the general public. They include the popular Maple Sirup Experience Tours on March 3, Sirup for Scouts on February 25, Maple Sirup Seminars, and Little Tappers for preschool children. More information will be available in the January newsletter and online. Be sure to check out these one-of-a-kind programs!

Thanks to Our Supporters

WELCOME TO OUR NEW & RENEWING MEMBERS!

SENIOR/STUDENT

George & Twila Braden ❁ Valle H. Funk ❁ E. Joan Miller ❁ Pam Terry

SUGAR MAPLE

Judy Adelman ❁ Aiden, Amy, & Jason Kuhlman ❁ Andrew & Jennie Lawyer
Norris & Beth Porter ❁ Bob & Suzanne Quiggins ❁ Curt Rehtmeyer ❁ David Scoates
Chris, Kim, & Ellowyn Simmons ❁ Ken & Pat Sylvester ❁ The Gordon Family

PAW PAW

Robert & Barbara Hathway ❁ Michael & Dianna Keough ❁ Ken & Judy Miller
Lance & Candy Rogers ❁ Ruth Wantling ❁ The Heger Family

AMERICAN SYCAMORE

Mark & Carol Cabaj ❁ Celia M. & Jeffrey R. Elliott

SHAGBARK HICKORY

David & Andrea Bortell ❁ Al Bedell & Deanna Frautschi

BLACK WALNUT

Drake Zimmerman & Jan Elflin ❁ Mel Niepagen

PAUL A. FUNK FOUNDATION

In the mid-1990's the dream of creating a Nature Center in Funks Grove was well on its way to reality after the Funks Grove Cemetery Association purchased the area known as Sugar Grove. The Paul A Funk Foundation has provided funding for Sugar Grove Nature Center from the very beginning and has continued to support our daily operations with an annual gift. Their continued support is vital to the programs that thousands of visitors enjoy throughout the year.

IN REMEMBRANCE

Our thoughts and deepest sympathies go out to the friends and families of Geoff Farnsworth and Pete Hartmann. Thank you to those who chose Sugar Grove Nature Center for their memorials. Contributions received in their memories will be so helpful in enabling us to continue sharing nature and touching lives. We hope this will be of some comfort to those left mourning and healing.

MEMORIAL GIFTS & BEQUESTS

We hope you will consider Sugar Grove Nature Center in your estate planning. Memorial gifts and bequests are an important way you can make a lasting contribution to the preservation and maintenance of this important natural area and environmental education center. If you wish to make a provision in your will, the following general form is suggested: "I give Sugar Grove Foundation, an Illinois not-for-profit 501(c)3 organization (37-1338932), which receives mail at 4532 N 725 East Road, McLean, Illinois 61754, the sum of \$_____ or _____ percent of the residue of my estate (or specifically described property) for Sugar Grove Nature Center." If you have already named Sugar Grove Nature Center in your plans, we would like to acknowledge your meaningful gift. Please contact Angela Funk, Director, at 309.874.2174.



Sugar Grove Nature Center Membership

Become a member of Sugar Grove Nature Center! Your membership supports quality environmental education programs, land stewardship, research opportunities, and so much more! Sugar Grove Foundation is a non-profit organization that receives no tax support. Memberships, program fees, private gifts, and corporate and foundation grant support are the lifeblood of our organization.

All Membership Levels, including **Student/Senior (\$15)**, **Sugar Maple (\$25)**, and **Paw Paw (\$50)**, receive:

- ✿ Discounts on classes, programs, and events
- ✿ Benefit of checking out books from the Nature Center Library
- ✿ Discount at Annual Spring Native Plant Sale
- ✿ Reciprocal membership at nature centers around the country

The Student/Senior level is for individuals. Family memberships begin at the Sugar Maple level.

Higher giving levels:

✿ **American Sycamore (\$100)**

All of the above benefits plus a 20% one-time discount at Wild Birds Unlimited in Normal, IL

✿ **Shagbark Hickory (\$250)**

All of the above benefits plus two Free Admissions to Annual Autumn Celebration

✿ **Black Walnut (\$500)**

All of the above benefits plus a nature photograph featuring the flora & fauna of Funks Grove

✿ **Blue Ash (\$1000)**

All of the above benefits plus a NatureScape Backyard Habitat Consultation

✿ **Bur Oak (\$5000)**

All of the above benefits plus a guided trail ride through Funks Grove



MEMBERSHIP FORM

- \$15Student/Senior (65+)
- \$25Sugar Maple
- \$50Paw Paw
- \$100American Sycamore

- \$250Shagbark Hickory
- \$500Black Walnut
- \$1000Blue Ash
- \$5000Bur Oak

Name: _____

Address: _____

City: _____ State: _____ Zip: _____

Phone: _____ Email: _____

- How would you like your newsletter recognition to be worded? _____
- I do not wish to be recognized in the newsletter.
- Please send me newsletters via email.
- Please send me newsletters via US Postal Service.

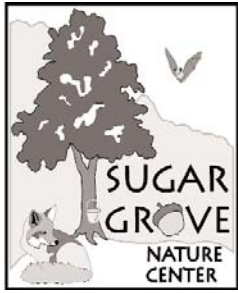
Memberships are valid for one year.

*Membership contributions are tax deductible. Please ask your employer about matching gift programs!
Sugar Grove Nature Center will neither sell nor trade personal information provided by donors.*

**Make checks payable to Sugar Grove Nature Center and return to:
Sugar Grove Nature Center ● 4532 N 725 East Road ● McLean, IL 61754**



Sugar Grove Foundation
4532 N 725 East Road
McLean, IL 61754



*Help us save printing & postage costs by receiving your newsletter electronically!
E-mail info@sugargrovenaturecenter.org to be added to the list!*

NON PROFIT ORG
US POSTAGE
PAID
PERMIT 365
BLOOMINGTON IL

Nature Center Hours

April - October
Tuesday - Friday, 9:00 a.m.-5:00 p.m.
Saturday, 10:00 a.m.-3:00 p.m.
Sunday, 1:00-4:00 p.m.

November - March
Tuesday - Saturday
10:00 a.m.-3:00 p.m.

Grounds, trails, & Imagination Grove
open daily dawn to dusk.

Contact us at:

Sugar Grove Nature Center
4532 N 725 East Road
McLean, IL 61754
309.874.2174
info@sugargrovenaturecenter.org
www.sugargrovenaturecenter.org

Latitude: N 40° 20.893'
Longitude: W 089° 08.007'

